

## Dreamweaver Advanced

### Site Management

Site- Management is a mechanism used to keep track of web pages you build for a specific web project and the assets you use in them. Think of Site-Management as a holding tank or a central storage location for all related files, aka **Root Folder**.

### Creating and Defining a Site

Create a Site prior to building any pages for your web project. The Site you create will have a unique name and a storage folder, Local Root Folder, which will be used to hold all the related pages for the web project.

### Open Dreamweaver.

From the **Menu toolbar** select **Site | New** or Press the **shortcut key F5** to open the **Site Definition** dialog box.

Specify a **Site Name** by clicking with the mouse in the **Site Name** field.

The **Site Name** is an internal naming convention. When naming the Site don't worry about spaces or capitalization.

Select the **Folder** icon to the right of the **Local Root Folder** field to create a new **Local Root Folder** or browse and select the folder that will hold the web site and be known as the Local Root Folder.

When back to the **Site Definition** dialog box the **Local Root Folder** should display the folder name just created or selected.

All the files and subfolders that you use for your Site should be stored in the specified Local Root folder so that when you create your pages, the graphics and links are relative to the that folder. When you get ready to publish, you will only need to copy the root folder, which will contain all files and subfolders, and copy (Put) them on the Remote Server (Web Server) from your Local computer. When you **Put** your Site on the Remote Server, Dreamweaver will maintain an identical directory structure as your Local Root to ensure links and references work.

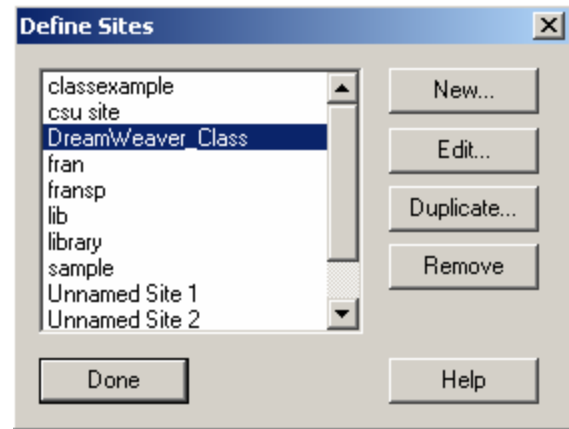
From the **Site Definition** dialog box be sure to select the **Refresh Local File List Automatically** so that Dreamweaver updates the site list when it has been modified.

From the **Site Definition** dialog box be sure to select the **Enable Cache**. This feature will create a cache that will help increase the speed for link management while working in Dreamweaver. The **Site** is now defined. Setting up the Web Server Information

From the ACNS/CTSS Bulletin complete steps 1,2, and 3.

Choose **Sites | Define Sites**

From the **Define Sites** dialog box select the site and choose the **Edit** button.



From the **Site Definition** dialog box select **Web Server/Remote Server Information** in the **Category** section.

Select the **down arrow** to the right of the **Server Access** field and choose **FTP**.

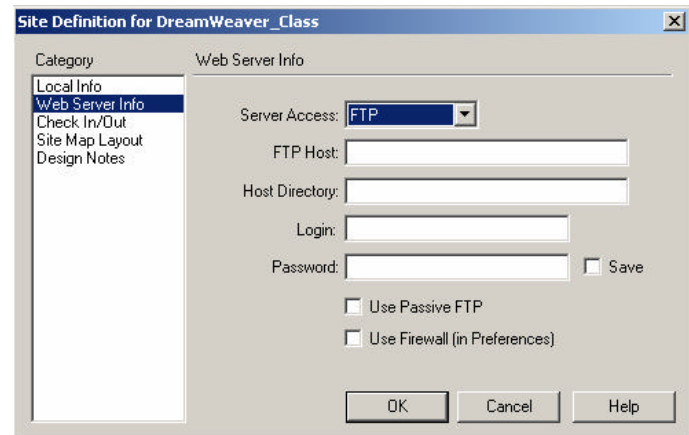
The **FTP Host** will either be:

**holly.colostate.edu** if you have a **Holly Account**. *Undergraduate Students have Holly accounts.*

**lamar.colostate.edu** if you have a **Lamar Account**. *Faculty, State Classified and Graduate Students normally have Lamar accounts.*

**yuma.colostate.edu** if you have **CWIS Account**. *Departments use CWIS accounts to create official CSU web pages.*

The **Host Directory** will be the **Present Working Directory (PWD)** for your lamar, holly or yuma account.



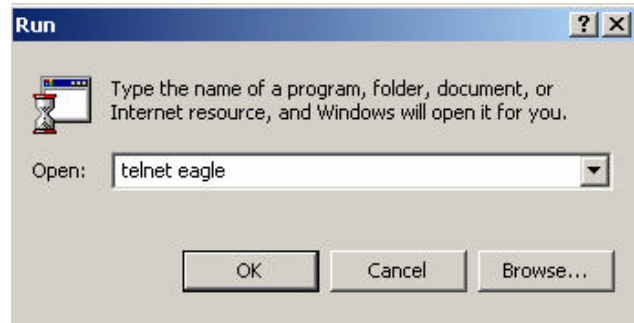
## To find your PWD follow these steps:

From the **Start Menu** select **Run**.

From the **Run dialog** box type one of the following options:

*telnet holly*  
*telnet lamar*  
*telnet yuma*

Press **OK**.



From the **Telnet Session dialog** box type the **Login** and **Password**:

```
AIX Version 4
(C) Copyrights by IBM and by others 1982, 1996.
login: ctss21
ctss21's Password:
```

Once logged in to your account **press Return** when the **terminal type** message appears:

```
Enter your terminal type at the following prompt or press return
to get VT100.
TERM = <vt100>
```

At a new command line (a line starting with a percent sign %) type the command: *pwd*

```
% pwd
```

Be sure to type the command in all lowercase with no spaces.  
**Press Enter.**

The **PWD** of the user logged in will display in a similar format as noted below:

```
/s/CTSS/ctss21
```

Write down the **PWD** → The **PWD** starts with a forward slash (/).

**NOTE: The PWD path you are writing down is case sensitive and contains no spaces.**

The PWD path you wrote down is the required information for the Host Directory in the Web Server dialog box in Dreamweaver. Be sure to specify the *public\_html* folder as the destination at the end of the PWD path when copying files.

Type in the Username and password for the account.

Last, press the **Connect** icon to connect to the Web Server and **PUT** (this is a copy feature) the files from the Local Computer to the Remote Computer.

## Style Sheets

A Style is a group of formatting attributes identified by a single name that controls the formatting of a text block. Style Sheets can include fonts, font size, the color of the text, and other options. Styles are a good way to keep the look of your web pages consistent.

Style sheets work in 4.0 (or later) browsers. Internet Explorer 3.0 recognizes some styles. Styles can be used to customize one document, or you can use an external style sheet and link it to several other documents.

### Types of Styles

There are three types of Styles. One style is to redefine an existing HTML tag. The second type of style is the custom style. The custom style is where you create your own custom formatting/styles and apply the new style to selected text. The third type of style, a CSS Selector is for formatting a particular tag. For example, modify the hyperlink tag so that when it appears in the browser, it is not underlined.

### External Style Sheets

External Style Sheets can be created and stored externally and linked to documents. An External Style sheet is a text file containing only style specifications. Note, you can create an external style sheet in one of your documents, which is automatically linked to that document, and then link the style sheet to the documents in your site. Again, External Style Sheets give consistency to your site.

### Create and Apply a Custom Style For the Current Document

Create a custom style and apply to text in the current document. We will define the font, font size, and font color.

- Open the CSS Styles Palettes from the Windows Menu.
- Select the New button from the CSS Styles Palette or select New from the CSS Styles Menu.
- From the New Style dialog box select the Make Custom Style (class) and enter a name for the Style in the Name field.
- **Note:** Custom Style Names always begin with a period. Dreamweaver will insert the period if you forget. Also, when typing the Style name to not use spaces or punctuation.
- Press OK when finished.
- Enter the attributes of the style in the Style definition dialog box.
- With the Type Category selected select a Font, Font Size, and a Color from the pull-down menus.
- Click OK when finished.
- The new Style appears in the CSS Style Palette.

- Apply the Style by first selecting text and then clicking on the Style in the CSS Style Palette.

Note: You can also select a Layer or Table and apply the Style.

To remove a style select the area that has the Style applied to it and select **None** from the CSS Style Palette.

### **Redefine HTML Tag**

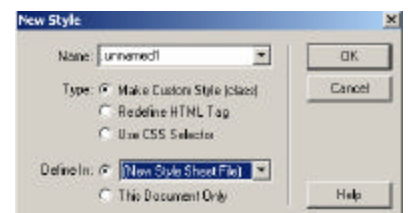
- Open a new file and save it immediately.
- Open the CSS Styles Palette from the Windows Menu
- From the CSS Style Palette click on the New icon.
- From the New Style dialog box select Redefine Html Tag option.
- Select the tag from the tag pull down menu to redefine.
- Select the location in which the style will be defined: New Style Sheet File (external) or This Document Only.
- Choose OK when finished.

### **CSS Selector**

- The CSS Selector defines the formatting for particular tags
- Open a new file and save it immediately
- Open the CSS Styles Palette from the Windows Menu
- From the CSS Style Palette click on the New icon
- Select the CSS Selector from the New Style dialog box
- Choose a selector from the menu. The selectors available from the menu are a:active, a:hover, a:link, and a:visited.
- Select the location in which the style will be defined: New Style Sheet File (external) or This Document Only.
- Choose the formatting settings for the new CSS style.
- Choose OK when finished.

### **Creating an External Style Sheet:**

- Open a new file and save it immediately.
- Open the CSS Styles Palette from the Windows Menu
- From the CSS Style Palette click on the arrow located on the right-side of the CSS Styles Palette and choose Edit Style from the Menu.
- Select the New button from the Edit Style dialog box.
- Decide which type of Style you want to create and Define it in a new Style sheet. Click OK.
- Dreamweaver will navigate you to a Save As dialog box for the Style Sheet. The extension for the Style Sheet will be .css.



- A Style Definition dialog box will display on the screen where you can customize the formatting options for the particular type of style you are creating.
- Note: Be sure to LINK the .css file to other files in the site when creating new web pages.

### Edit a Style

- Select the Style from the CSS Styles Palette and choose Edit from the CSS Style Menu.
- Make the modifications and choose OK when finished.

### Exporting Styles to Create a CSS Style Sheet

You can export styles from a document to create a new CSS style sheet. You can then link to other documents to apply these styles. **To export CSS styles from a document and create a CSS style sheet:**



- Choose File | Export | Export CSS Styles or choose Text | Export Style Sheet.
- Enter a name for your style in the Export Styles as CSS File dialog box click Save. The style is saved as a CSS style sheet.

## Cell Layout Tool

Dreamweaver 4 has a new tool called the Cell Layout tool. The Cell Layout tool is similar to a cell in a table. The Cell Layout tool allows you to draw boxes on your web page that can hold objects or text in place.

**Use the Cell Layout Tool to design your web page. Draw cells on the canvas where you plan to insert images and text as placeholders and then go in and insert images and text.**

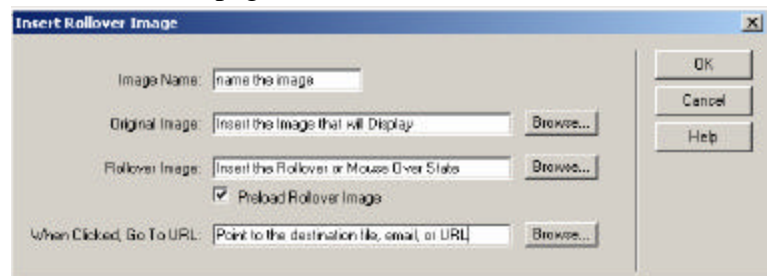
### Using the Cell Layout Tool

- Select the **Layout View** icon from the Objects Palette. Note the Default view is the Standard View, which is used for regular editing. 
- When the Layout View icon is selected, a dialog box will display explaining how the Layout and Standard View work.
- Select the Draw Layout Cell icon to draw a cell on the page. Left-click the mouse and drag the mouse to draw a cell. The cell will display in the color blue. 
- Notice that Dreamweaver creates a table in the background to house the cell that you draw. The table in the background will display in the color green and will be tagged Layout Table.

- Select a cell to resize or drag to a new area on the page. A selected cell will display in the color blue. Note the Property Inspector can also be used to change the cell properties.
- Select a cell and use the Properties Inspector to change cell properties such as the background color of the cell.
- To delete a cell select it and press delete.

## Rollover Images

A Rollover image consists of two states, a display state and a rollover state. The display state is how the image appears when the user visits the web page. The rollover state will only change when the user moves the cursor over the image. The Rollover Image icon is located in the Objects Palette and also in the Insert, Interactive Images, Rollover Images menu.



## Template

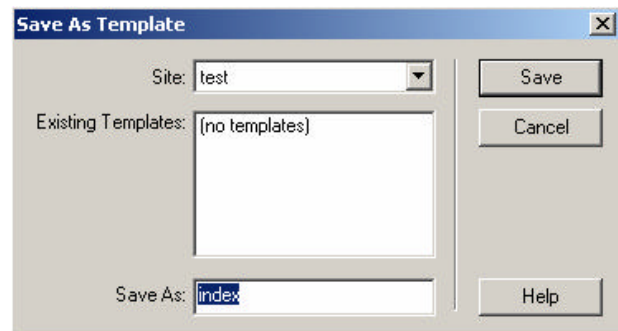
Creating and using templates can be a big time-saver for web developers. Design one page and save it as a template to add consistency to your web site. A Template ensures that your web site has a consistent look and feel, which in turn means it's easier for users to navigate the site.

### To apply a template to an existing document:

Choose **File | Save as Template**

From the Save As Template dialog box  
Select the site and name the template.

*For this class choose web as the site.  
Name the template index.*



### Add editable regions on your template.

What items on the template do you want users to access and change? Select the layer that you want users to be able to change and choose **Modify | Templates | New Editable Regions**. A **Region dialog box** will open asking for a region name. Type a region name and press **OK**.

Save your template by choosing **File | Save**.

## To create new files based on a template:

Choose **File | New From Template**

From the **Select Template dialog box** choose the template.

Only areas that have an editable region can be modified. Save the document as an .htm document when finished.

**Note: When you edit a template and save it, Dreamweaver will automatically update all the files that were created from the template.**

## Publishing Using Dreamweaver

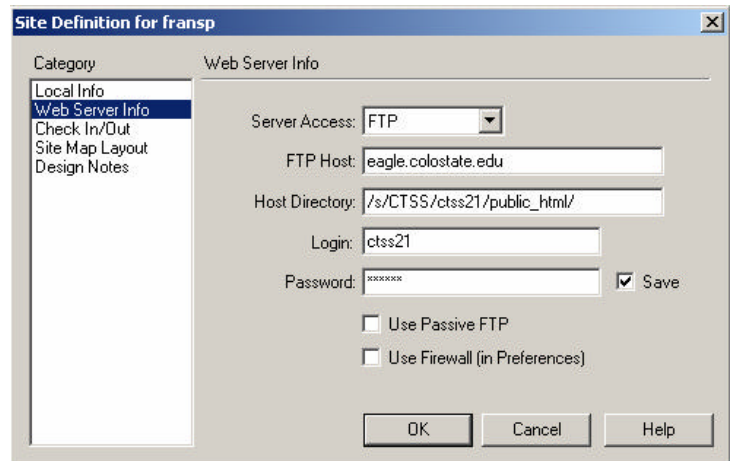
When the web site is complete and has been tested to ensure everything is working then it is time to copy your site to the Web Server.

**Use the ACNS/CTSS Bulletin on Network Tools, Creating a WWW Home Page for help on publishing.**

Type the login name for the account in the **Login field**.

Type the password for the account in the **Password field**.

**Press OK when finished.**



From the **Site window** choose the **Put button** to copy the files from your site to your account on the web server.

Choose **Window | Site FTP Log** to view any errors in the File Transfer.

Select the Browser of your choice and view your web site.

URL: <http://servername.colostate.edu/~username>

Example for class:

<http://eagle.colostate.edu/~ctss21>

Example for lamar:

<http://lamar.colostate.edu/~fran>